

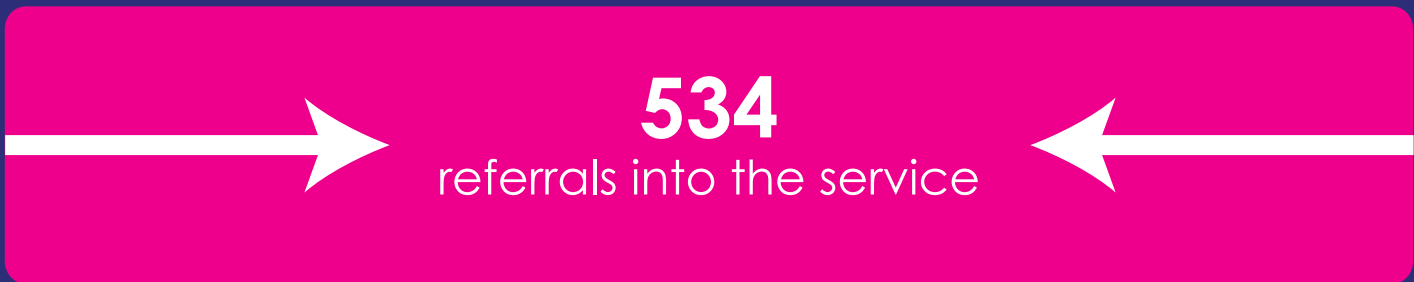


95% health care professionals surveyed say

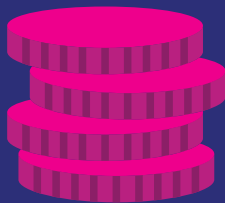
'social prescribing supports wellbeing'



73% (patients supported 1:1) accessed services and support



£94



cost per patient



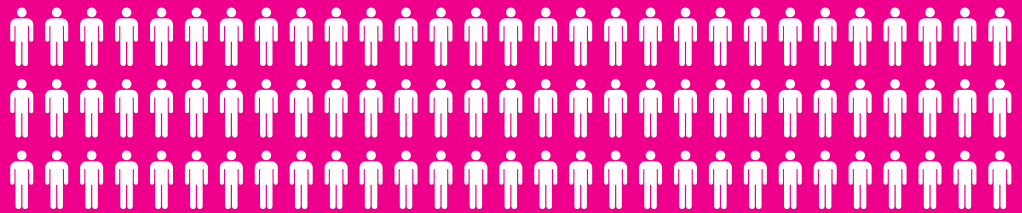
Patients less likely to visit GP
(100% focus group attendees)

100%

health care professionals surveyed say 'losing the service would affect patient health'

87

Clinicians referred



Social prescribing named one of NHS England's

'10' high impact actions

38 different community services referred into

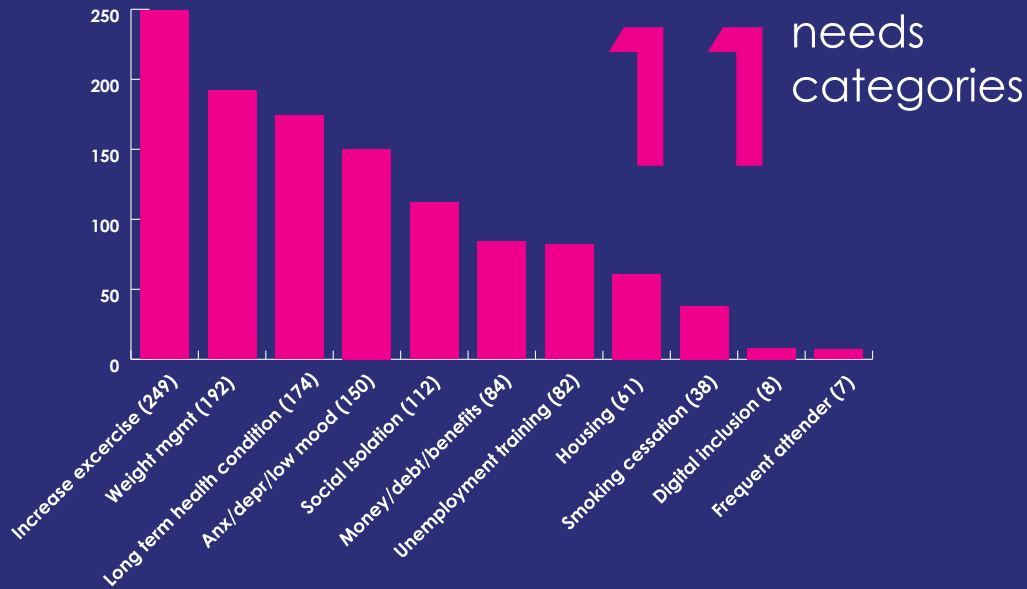


1,100 Centre visitors

(came to learn about social prescribing)



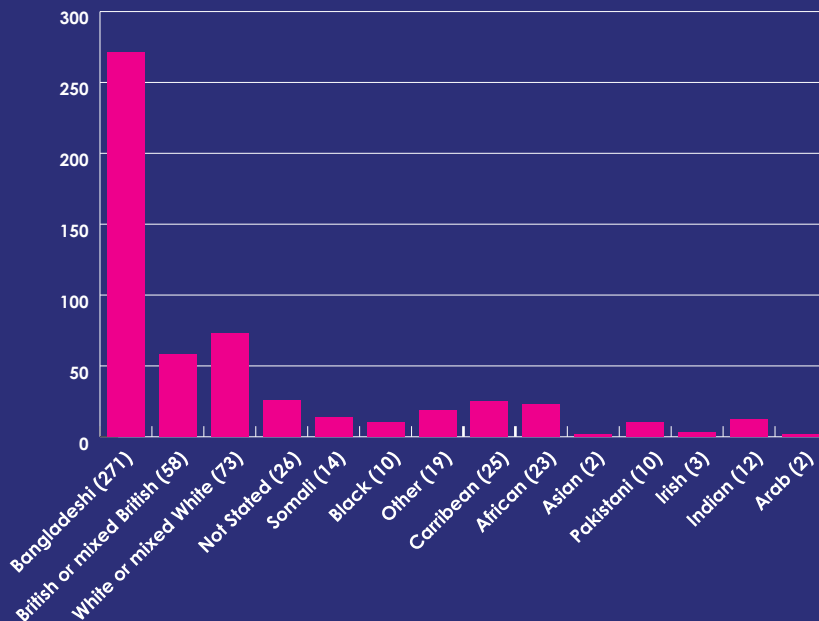
Needs identified by health care professional



Note: Patients can be referred for more than one need.

Ethnicity of social prescribing referrals

50% from our Bangladeshi community

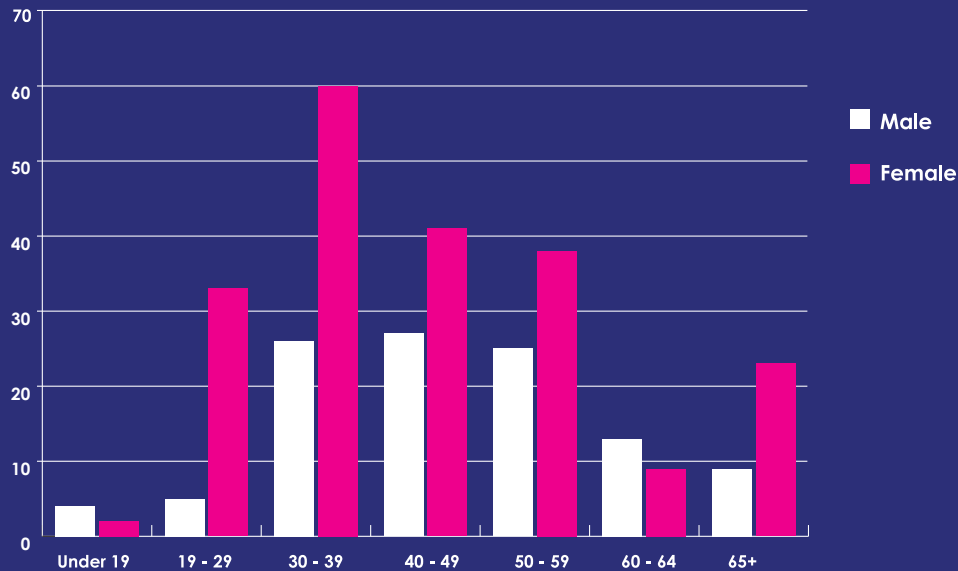


Note: Category 'other' is a group that consists of one patient from each ethnic classification



Age and gender breakdown

1:2   



Note: Clustered age bands in the middle years demonstrates early presentation of some conditions and resulting earlier intervention in the MEEBBB network area

The knowledge

Informing policy and practice in social prescribing

Throughout the year, the Centre has contributed to conferences, policy research programmes and papers on social prescribing including:

- Public Health England's national conference on mental health
- The Healthy London Partnership
- Transforming Primary Care - Proactive Care Reference Group
- The Department of Work and Pensions - Department of Health Joint Unit on health, disability and employment
- The Department of Health - Ministry of Justice Health research programme in healthcare in the criminal justice system.
- The Low Commission report on welfare advice in primary care
- Manchester Devolution research on best practice in asset based approaches
- Cabinet Office Commissioning Academy
- National Voices and Work Foundation research.

BBBC also sits on the steering committee of the UK Social Prescribing Network, launched at the House of Commons in early 2016.